

DEC-300-HDSDI



H.264 & MPEG-2 HD/SD DECODING BLADE AND PORTABLE DEVICE

PRODUCT DESCRIPTION

The DEC-300 is a professional compact H.264 SD/HD and MPEG-2 SD/HD video/audio stream receiver and IPTV decoder. It is designed for network IP video system integration. As an output decoder device for streaming media it provides easy access to DVB IP and IPTV streams on HD-SDI and analog video outputs.



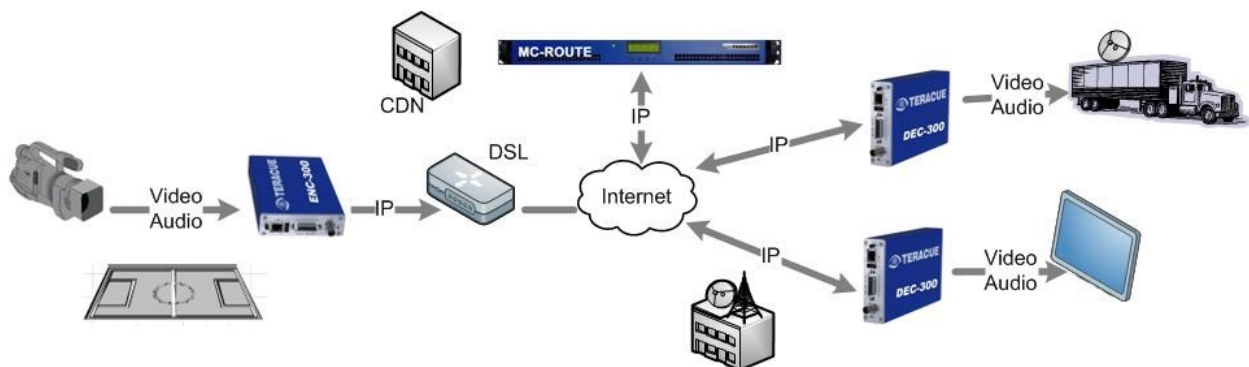
UNIQUE FEATURES AND BENEFITS

- Robust hardware solution for 24/7 operation
- Real-time hardware HD/SD device
- H.264 and MPEG-2 HD/SD decoder
- Forward error correction Pro-MPEG FEC
- Low delay support
- Talkback for audio conferencing
- Export & import of presets
- UDP & TCP (error correction) streaming
- Low power consumption
- Extended temperature range
- Management by web interface

APPLICATIONS

- Broadcast & CDN IP contribution
- Wireless & mobile streaming
- Digital signage streaming
- IPTV/OTT streaming
- Medical & campus TV
- Telemedicine
- Security monitoring
- Stadium & event TV
- Training & research
- Video monitoring
- Control rooms & command centres

Application example: Contribution over DSL with multiple destinations



Professional quality and easy configuration

DEC-300 decoders incorporate low-latency compression technology and professional signal processing, creating full resolution video output in HD resolution. To access the intuitive graphical user interface use your standard web browser from any PC on the network. Remote network configuration is also supported over SNMP, by Telnet and by control over the local COM port.

DECODING SPECIFICATION:	
Standards:	PAL, NTSC, 720p 50/60, 1080i 50/60, 1080p 25/30
Video Inputs:	HD-SDI output: 0,8 VPP, 75 Ohm (BNC , embedded audio support) Breakout cable outputs: Composite, S-Video, Component
Breakout cable outputs:	Composite, S-Video, Component
Video resolutions:	Full D1: 720h x 480/576v, Half-D1: 352h x 480/576v, CIF/SIF: 360/384h x 288/240v, QCIF: 176h x 144/120v 720p 50/60, 1080i 50/60, 1080p 25/30
Audio outputs:	Unbalanced analog stereo, consumer line level
Audio inputs (Talkback):	Analog stereo, consumer line- and MIC-level
Video codecs:	MPEG-2 (ISO/IEC 13818-2), Main Profile at Main Level (MP@ML), 4:2:0; High Profile at Main Level (HP@ML), 4:2:0 MPEG-4 AVC/H.264 (ISO/IEC 14496-10), Main Profile at Level 3.1 (MP@L3); Baseline Profile at Level 3.1 (BP@L3), 4:2:0; High Profile at Level 4 (HP@L4)
Stream types:	Elementary AV
Audio codecs:	MPEG-1 Audio Layer 1, 2 (ISO/IEC 11172-3 Layer 1, 2) MPEG-4 AAC LC (ISO/IEC 14496-3)

I/O SPECIFICATION:	
Network:	10/100TX Ethernet, RJ45, half/full duplex, auto-sensing
Streaming Traffic:	Unicast and multicast traffic supported, TCP, RTP
IP Protocols:	HTTP (web browser), TCP/IP control protocol, UDP/TCP streaming, IGMPv2, SNMP, DHCP
Error correction:	Pro-MPEG FEC (forward error correction) and TCP
RS-232/422 port:	RS-232 connection via console (remote control for non IP devices via TCP/IP RS-232/422 command tunnelling)
GPI in:	1 INPUT, isolated
GPI out:	1 OUTPUT, isolated
USB port:	(For future use)
Management:	Web browser, SNMP, Telnet and RS-232, software updates via web browse Fault measurement with log generation, authorization via user password, RTC (Real Time Clock) support

ENVIROMENTAL:	
Agency approvals:	CE, RoHS compliant
Humidity:	Up to 90%, non-condensing
Temperature:	-25 to +45°C environment temperature; fanless when operated as -PORTABLE
Blade weight:	Approx. 130 grams
Blade dimensions (H/W/D):	20mm x 130mm x 190mm, Europe Card (160mm x 100mm, 3HE), Conform to IEC60297-3/-4
PORTABLE weight / dimensions:	Approx. 700 grams / (H/W/D) 28mm x 104mm x 192mm
Power:	5Vdc ±10% / 8W per blade
Limited Warranty:	1 year standard limited warranty. Warranty extensions for up to 5 years available.

ORDER INFORMATION:	
DEC-300-HDSDI	H.264 HD & MPEG-2 HD decoder blade with HD-SDI-, embedded audio-, analog video/audio output.
DEC-300-HDSDI-Portable	H.264 HD & MPEG-2 HD portable decoder device with HD-SDI-, embedded audio-, analog video/audio output. Including power supply.
300-UPG-FEC	Upgrade option for ENC-/DEC-300-Series for forward error correction.
BREAKOUT-CABLE-S-D	YC (miniDIN), Composite (RCA jack), analog audio out (RCA jack), analog audio in (3.5 mm phone jack) connectors incl. RCA jack to 3.5 mm phone plug adapter. Breakout cable S is included in delivery.
BREAKOUT-CABLE-P-3D	Composite/YC/YBPBR (all BNC female), analog audio out/in (RCA jack), GPI in/out (Sub-D 9-pin), RS-232/422 (Sub-D 9-pin) connectors.